

# A REVOLUTION IN WIND ENERGY

TAKE BACK YOUR POWER



Flower Turbines are designed to quietly produce clean energy at low wind speeds from any direction, while still allowing people to live next to them.



**Low Noise,  
High Efficiency**



**Bird  
Friendly**

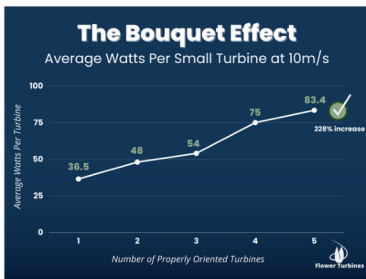
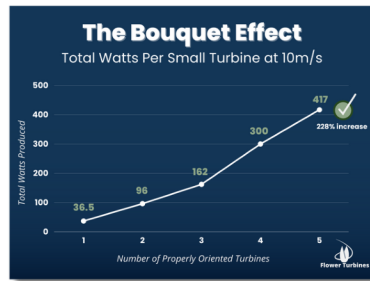
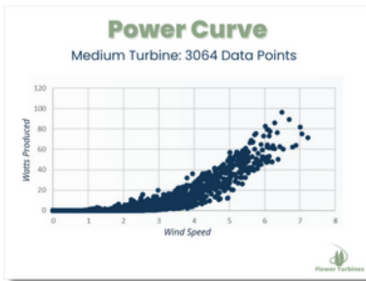


**Eco & Art  
Aesthetic**



**Starts at Low  
Wind Speeds**

Flower Turbines' ability to place units in a bouquet to increase a group's performance is revolutionary. The bouquet effect enables our turbines to produce more power per square meter than solar in windy areas. Patented design, aerodynamics, and quality materials ensure a good cost of ownership and durability, outperforming other turbines at low wind speeds and whenever bouquets of turbines can be installed as a bouquet.



## DURABILITY

Our smallest version was put on top of a truck and driven over 115 mph (52 m/s or 185 km/hour) with no problems.

## LOW STARTING SPEEDS

Our turbines begin to rotate at 0.7 m/s.

## BEAUTY

Flower Turbines' products are easier to zone and enhance the value of your property. For corporations, you can have your colors and logo on your turbine's beautiful surface.

## BIRD SAFETY

Our turbines are easily visible and bird-friendly.

## LOW NOISE

Our products are quieter than the wind according to a third party report.

\*charging stations also available.



Scan this QR Code to visit our online store and purchase our available products.



Scan this QR Code to use our online Bouquet Effect Calculator.



Scan this QR Code to view our Third Party Sound Testing Report.

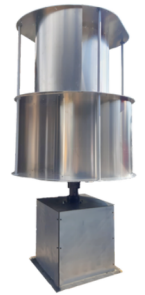


Scan this QR Code to complete our project detail form for help planning your project.

# A REVOLUTION IN WIND ENERGY



TAKE BACK YOUR POWER



**Survival  
Unit**

**Small  
Tulip**

**Medium  
Tulip**

**Large  
Tulip**

**Power  
Tower**

**BLADE HEIGHT**

1.15 m  
(3.77 ft)

1.15 m  
(3.77 ft)

2 m  
(6.56 ft)

5 m  
(16.404 ft)

1 m  
(3.281 ft)

**TOTAL HEIGHT**

2.08 m  
(6.81 ft)

1.4 m  
(4.58 ft)

2.62 m  
(8.58 ft)

6 m  
(19.69 ft)

Modular:  
4.95-6.95  
m (16.25-  
22.8 ft)

**DIAMETER  
(AT WIDEST POINT)**

0.68 m  
(2.231 ft)

0.55 m  
(1.79 ft)

1.18 m  
(3.85 ft)

2.4 m  
(7.87 ft)

1.7 m  
(5.577 ft)

**RATED POWER  
(HIGHER CAPACITY  
FOR BOUQUETS)**

100 watts

100 watts

500 watts

5 Kilowatts

5 Kw for a  
stack of 6

**EXPECTED  
PRODUCTION IN  
A BOUQUET OF 5  
(AT 12 M/S, 27  
MPH)**

N/A

≈144.7  
w/h each  
(≈723.5  
w/h total)

≈1.147  
Kw/h each  
(≈5.7 Kw/h  
total)

≈12.5  
Kw/h each  
(≈62.5  
Kw/h total)

≈12.5  
Kw/h each  
(≈62.5  
Kw/h total)



Scan this QR Code to visit our online store and purchase our available products.

2601 SE Loop 289 Suite 500, Lubbock, TX 79404  
support.us@flowerturbines.com FlowerTurbines.com

\*Please note that projected data is based on research, field testing, and simulations.



Scan this QR Code to complete our project detail form for help planning your project.

Copyrights, Patents, and Trademarks Granted and Pending. All rights reserved.